



# Central Mechanical

An EMCOR Company



SERVICE &  
MAINTENANCE

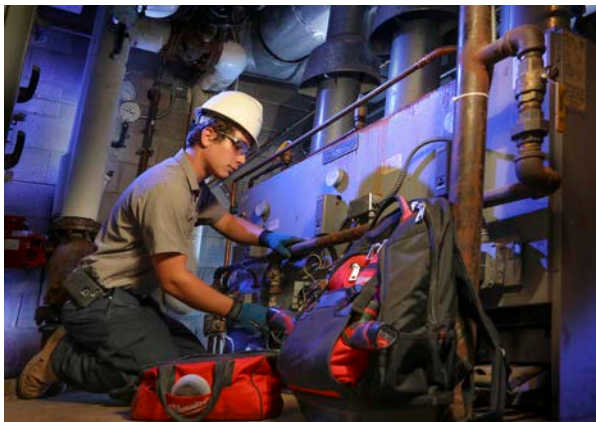
## Your Single Source Provider for Total Facilities Services.



As a single-source provider of facilities services, Central Mechanical has the people, processes, technology, and expertise required to self-perform a full range of service and maintenance solutions. Serving clients throughout northeastern Kansas, **we are known for delivering superior service by providing our technicians with the latest service tools and technologies, as well as a fleet of fully equipped and well-organized vehicles.**

We continuously train our “best-in-class” team of highly experienced and knowledgeable specialists on the latest technologies and service techniques. And since we’re brand neutral, our solutions aren’t limited to any one model or manufacturer. Instead, we can provide whatever systems and services best meet your specific business and facility operating requirements.

**The result is the right team and the right solutions for all the facilities services you need—we support your business instead of draining your bottom line.**



**We support your  
business—not drain  
your bottom line.**

### OUR SERVICES

Preventive Maintenance

Predictive Maintenance

HVAC

Scheduled Maintenance

Customized Maintenance Programs

Equipment & Operation  
Energy Evaluations

Refrigeration

Ductwork

Industrial Piping

Air & Water Balancing

Commissioning

Boiler Maintenance & Service

Backflow Prevention Testing

Thermal Image Scanning

Sewer Camera Inspections

24/7/365 Emergency Service

Retrofits & Replacements

Plumbing

General Construction/  
Handyman Services



## Customized Solutions

We can effectively and efficiently evaluate your facilities, and design a customized service and maintenance program that matches your budget to your objectives. By using fundamental maintenance solutions, we provide a results-oriented approach that adds value to your facilities and helps you achieve your business goals.

**We're here for you.** Central Mechanical is one of the Midwest's premier full service mechanical contractors and facilities services provider. By effectively installing, and maintaining your mechanical systems, we improve your overall productivity and quality of operations, so your business can perform at a higher level.

## Harnessing the Power of a Fortune 500® Leader

A Fortune 500® company, EMCOR Group, Inc. (NYSE: EME) is a leader in mechanical and electrical construction, industrial and energy infrastructure, and building services. With unmatched experience, broad reach, and local execution.

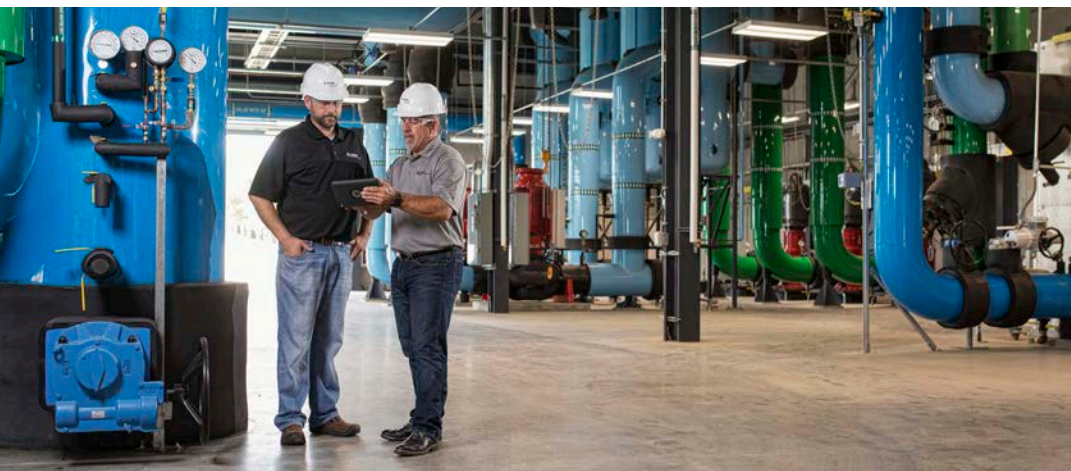
EMCOR Group specializes in planning, installing, operating, maintaining, and protecting the sophisticated and dynamic systems that create facility environments. This includes systems such as electrical, mechanical, lighting, air conditioning, heating, security, fire protection, and power generation.

EMCOR works in virtually every sector of the economy for a diverse range of businesses, organizations, and public sector clients. Combining the strength of an industry leader with the knowledge and care of over 170 locations, the 33,000+ skilled employees of EMCOR have undertaken and completed some of the country's most ambitious projects.

## While You Work, Injuries Lurk—Be Vigilant!

EMCOR's safety performance consistently remains strong year after year with a current rate that surpasses competitors 60–75% and ranks 66% lower than the Bureau of Labor Statistics industry average.

(Source: Bureau of Labor Statistics Industry Average for Specialty Contractors NAICS 238, 2016-2019)



## Contact our experts to learn more!

800.631.6999 | [service@centralmechanical.com](mailto:service@centralmechanical.com) | [centralmechanical.com](http://centralmechanical.com)

**Brian Romme** | Ext 134  
Director of Service Operations  
[brian.romme@centralmechanical.com](mailto:brian.romme@centralmechanical.com)

**Kevin Helms**  
Service Manager, Clay Center  
[kevin.helms@centralmechanical.com](mailto:kevin.helms@centralmechanical.com)

**Alexander Hulsing**  
Business Development & Preventive Maintenance  
[alexander.hulsing@centralmechanical.com](mailto:alexander.hulsing@centralmechanical.com)

**Mat Romme** | Ext 133  
Service Manager, Topeka  
[mat.romme@centralmechanical.com](mailto:mat.romme@centralmechanical.com)

**Kelli Myers** | Ext 132  
Business Development & Preventive Maintenance  
[kelli.myers@centralmechanical.com](mailto:kelli.myers@centralmechanical.com)

**Bryant Anderson**  
Service Estimator  
[bryant.anderson@centralmechanical.com](mailto:bryant.anderson@centralmechanical.com)

## WHAT CAN WE DO FOR YOU?

### EMCOR Central Mechanical

**Central Mechanical Construction**  
631 Pecan Circle  
P.O. Box 1063  
Manhattan, KS 66505  
T 785.537.2437  
F 785.537.2491

**Topeka Location**  
725 NE Highway 24  
Topeka, KS 66608  
T 785.232.4013  
F 785.232.3116

[centralmechanical.com](http://centralmechanical.com)